



SOCKET INSTALLATION MANUAL

SWIMMING POOL LIFT

DISPOSITIVO

i-swim3

MODELLO



ORIGINAL MANUAL



00

REVISIONE

08/2021

ANNO



TABLE OF CONTENT

Pool Lift

DISPOSITIVO

i-swim3

MODELLO

1.	GENERAL WARNINGS.....	3
1.1	WARNING	3
1.2	IDENTIFICATION AND POSITIONING	3
2.	GENERAL DESCRIPTION	4
2.1	SOCKET POSITIONING AND INSTALLATION	4
2.2	INSTALLATION AND REMOVAL OF THE LIFT	5

1.1 WARNING



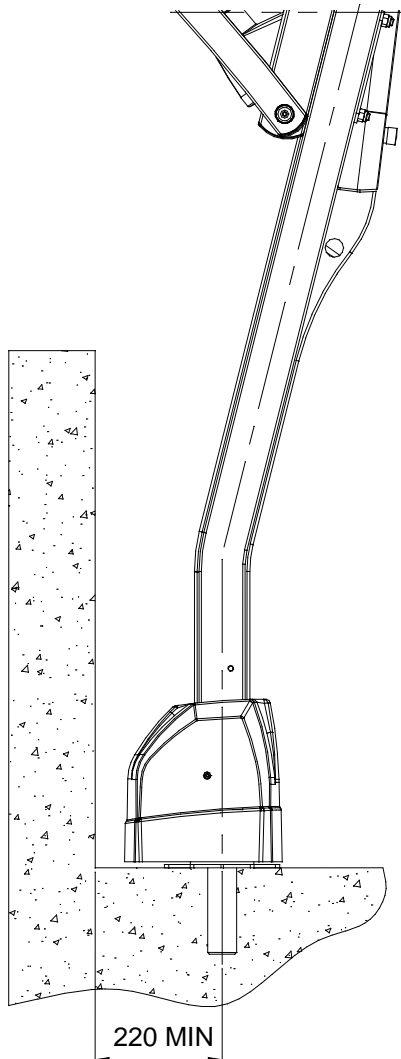
THE SOCKET IS A SAFETY COMPONENT AND HAS TO BE INSTALLED BY SKILLED PERSONS ONLY

AFTER INSTALLATION THE LIFT HAS TO BE TESTED IN ORDER TO VERIFY THAT THE SOCKET IS ABLE TO HOLD SAFELY THE MAX LOAD

1.2 IDENTIFICATION AND POSITIONING

The minimum distance of the lift to the pool edge or wall is shown in figure "A". Please position the lift at this suggested distance. The model "standard" and "Maxi" have to be positioned at 220mm and 250mm

MODEL "STANDARD"



MODEL "MAXI"

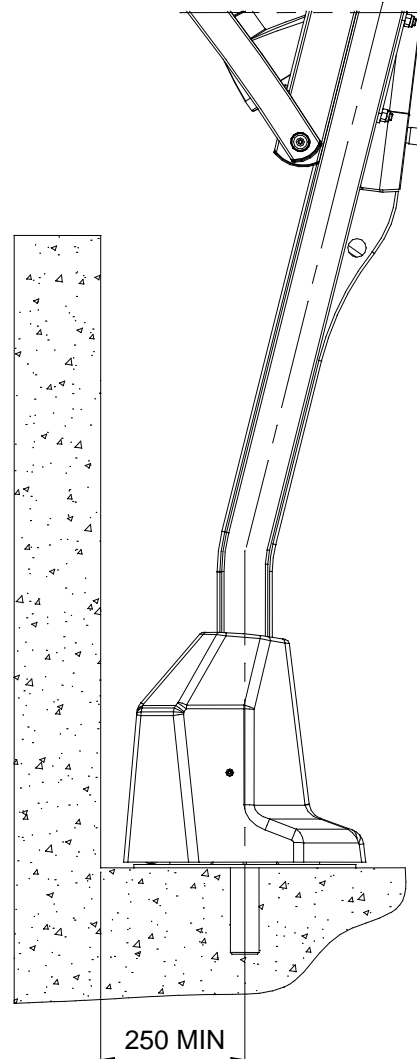


Fig. A
Pag. 3 di 5

2.1 SOCKET INSTALLATION

Figure "B" shows the hole and the positioning details:

1. Drill the hole with a hole saw bit $\text{Ø}100\text{mm}$ for a depth of 170mm.
2. Remove the material and prepare the envelope to fit the socket
3. Install the socket using concrete Class 32.5 (or higher)
4. Position the socket at the centre of the hole, making sure that its upper edge is at the level of the floor, where it is installed. The plastic cover has to protrude by 2mm from the ground (see detail "C")

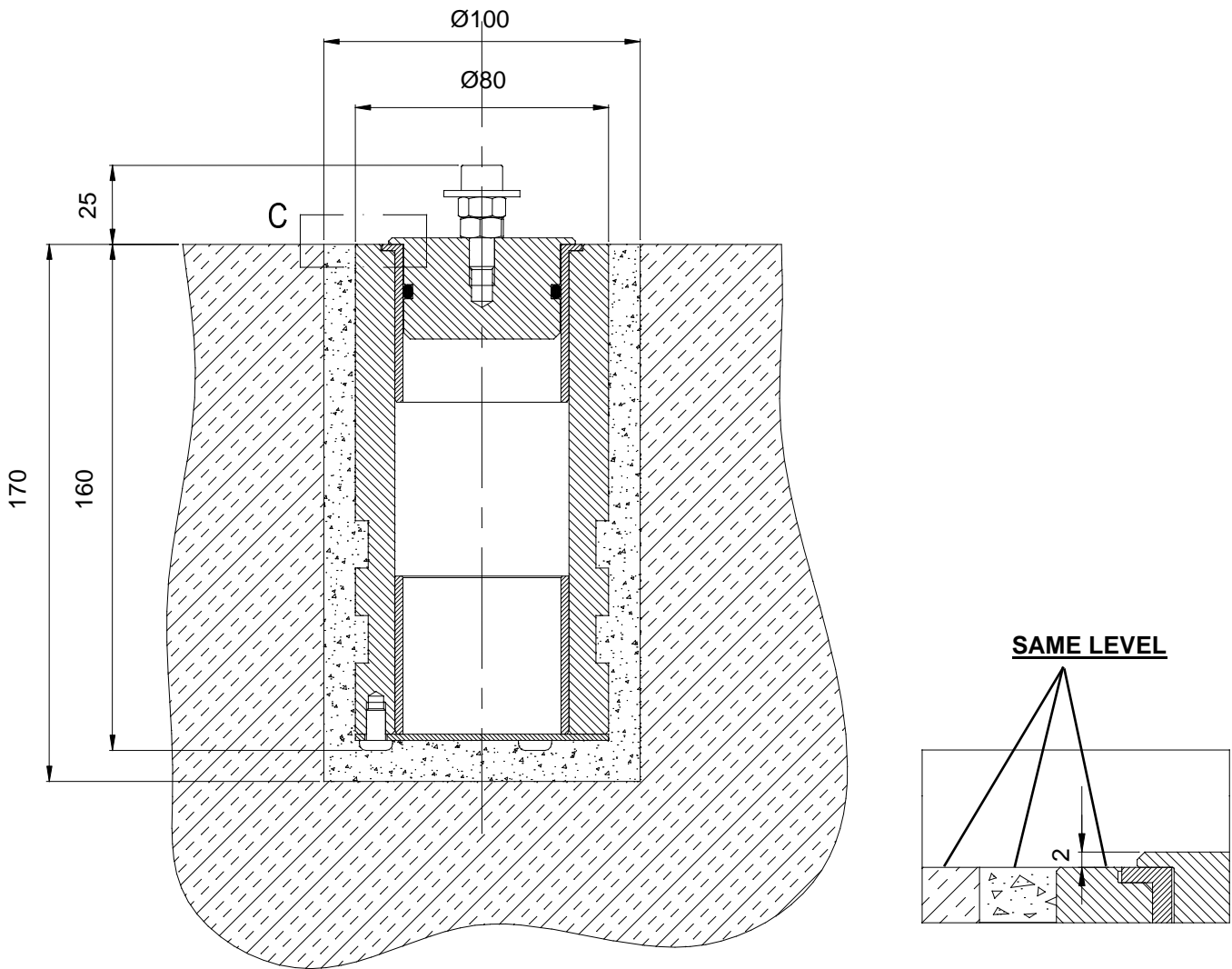


Fig. B

2.2 LIFT INSTALLATION AND REMOVAL

As soon as the concrete is solid, remove the socket cover and the lift can be installed

When the lift is removed from the socket close the hole using the plastic cover. The pulling handle can be removed to avoid that somebody trips over it.

